

QUARTERLY REPORT

OFFICE OF RESEARCH—FIRST, SECOND AND THIRD QUARTERS OF FISCAL YEAR 2013

SPONSORED PROPOSALS, AWARDS, AND EXPENDITURES

Senior Management Area	Proposals Submitted, FY 13				Awards Received, FY 13				Sponsored Expenditures	
	No.	% Incr. FY12	Amount Requested	% \$ Incr. FY12	No.	% Incr. FY12	Amount Received	% \$ Incr. FY12	Amount Expended	% \$ Incr. FY12
Architecture & Design	3	-70%	\$107,327	-97%	2	-50%	\$39,377	-57%	\$20,606	-92%
Arts & Sciences	376	-10%	\$88,094,410	-21%	298	-14%	\$29,990,110	9%	\$20,913,905	2%
Business Administration	23	28%	\$3,835,072	-70%	23	-23%	\$10,370,111	72%	\$10,097,408	44%
Communication & Information	25	0%	\$4,806,914	-5%	15	-35%	\$1,429,636	-2%	\$2,008,579	13%
Education, Health, & Human Sciences	73	-21%	\$34,427,673	-16%	37	-38%	\$6,040,301	-42%	\$11,038,923	8%
Engineering	457	-3%	\$154,436,347	-6%	371	0%	\$49,815,522	43%	\$35,453,029	18%
Law	2	100%	\$19,995	100%	2	100%	\$19,995	100%	\$14,009	100%
Nursing	19	73%	\$7,573,714	68%	7	133%	\$917,246	41%	\$511,394	32%
Social Work	22	-24%	\$3,352,097	-13%	22	-19%	\$3,268,015	-59%	\$4,302,554	-14%
Research Centers & Institutes	154	11%	\$78,631,788	1,001%	127	53%	\$12,716,492	-46%	\$17,681,059	0%
Other	19	27%	\$3,653,328	54%	12	-40%	\$1,381,290	3%	\$8,549,250	48%
Total	1,173	-5%	\$378,934,664	-10%	896	-7%	\$115,988,094	2%	\$110,590,716	12%

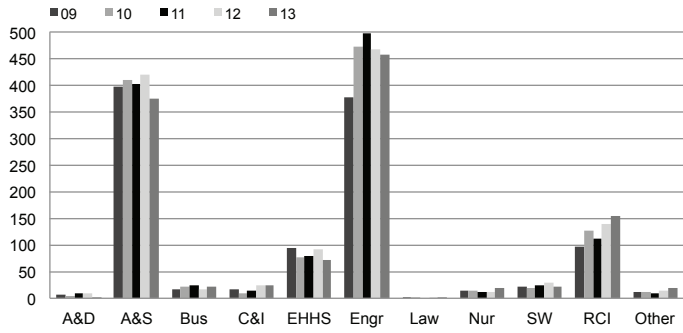
TOP 20 AWARDS

Investigators (Primary PI First)	Departments, Centers, & Institutes	Project Title	Sponsor	Amount*
Everett, Jerry	Center for Transportation Research	UT Program Admin Grant	TN Dept. of Transportation	\$6,400,000
Clarke, David	Center for Transportation Research	The Tennessee Transportation Assistance Program (TTAP)	TN Dept. of Transportation	\$5,000,000
Sickafus, K.; Weber, W.; Zhang, Y.; Wirth, B.; Miller, L.	Materials Science & Engineering	Advanced Accident-Tolerant Ceramic Coatings for Zr-alloy Cladding: The C ³ Project	Battelle Energy Alliance, LLC	\$3,510,000
Sayler, Gary	Joint Institute for Biological Sciences	BioEnergy Science Center, University of Tennessee, Phase II	DOE - UT-Battelle - ORNL	\$2,327,370
Cate, Matthew	Center for Transportation Research	Program Support for the Tennessee Department of Transportation's Safe Routes	TN Dept. of Transportation	\$2,000,000
Brewer, Ernest	Pre-College Enrichment Program	Upward Bound [Pre-College] - Revision 1	US Dept. of Education	\$1,933,160
Brewer, Ernest	Educational Leadership & Policy Studies	Academic Enrichment Upward Bound	US Dept. of Education	\$1,738,440
Brewer, Ernest	Pre-College Enrichment Program	Veterans Upward Bound Program	US Dept. of Education	\$1,579,580
Brewer, Ernest	Pre-College Enrichment Program	Upward Bound Math and Science Program	US Dept. of Education	\$1,485,170
Hazen, Terry	Civil & Environmental Engineering	Deep Sea Basin Microbiology	BP America	\$1,320,000
Gaylord, Nan; Skolits, Gary	College of Nursing	Interprofessional Care at the Vine School Health Center (I.C.V.)	DHHS - Health Resources and Services Administration	\$1,302,203
Nazarewicz, Witold; Papenbrock, Thomas	Physics	Nuclear Computational Low Energy Initiative (NUCLEI)	US Dept. of Energy - Office of Science	\$1,050,000
Qi, Hairong; Tolbert, Leon; Liu, Yilu; Cao, Qing Charles	Electrical Engineering & Computer Science	CPS: Synergy: Achieving High-Resolution Situational Awareness in Ultra-Wide-Area	National Science Foundation	\$1,000,000
Greene, Geoffrey	Physics	Experimental Weak Interactions with Pulsed and Continuous Cold Neutrons	US Dept. of Energy	\$900,000
Sarles, Stephen	Mechanical, Aerospace & Biomedical Engineering	Autonomic Biomolecular Materials for Sensing, Actuation, and Energy Conversion	Virginia Polytechnic Institute & State University	\$875,000
Tomsovic, Kevin; Djouadi, Seddik; Li, Husheng	Center for Electric Power	CPS: Synergy: A Cyber Physical Framework for Remedial Action Schemes	National Science Foundation	\$750,000
Larese, John	Chemistry	Pulsed Neutron Imaging and Diffraction Study of CdZnTe Materials under Realistic	DOE - National Nuclear Security Administration	\$749,512
Gordon, Kristina	Psychology	Relationship Rx: Integrating a Couples Intervention Program into a Primary Care	Administration For Children and Families	\$723,508
Mulligan, Geraldine	Center for Literacy Studies	Adult Education Professional Development and Technical Assistance	TN Dept. of Labor and Workforce Development	\$681,445
Wirth, Brian; Maingi, Rajesh	Nuclear Engineering	Diagnostics and Modeling in Support of Boundary Physics Research on NSTX Upgrade	US Dept. of Energy - Office of Science	\$675,000

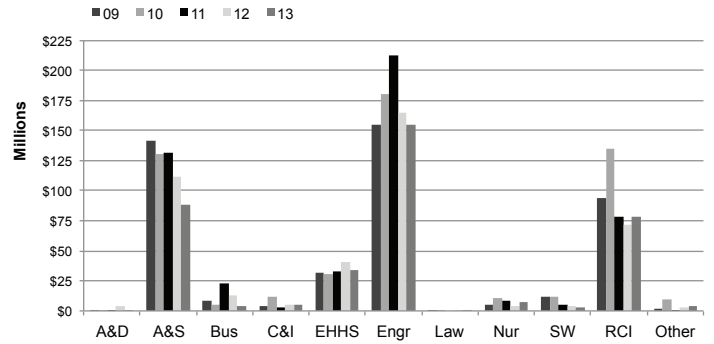
*Anticipated Maximum

**THE UNIVERSITY OF TENNESSEE, KNOXVILLE—OFFICE OF RESEARCH
 QUARTERLY REPORT FOR FIRST, SECOND AND THIRD QUARTERS OF FISCAL YEAR 2013**

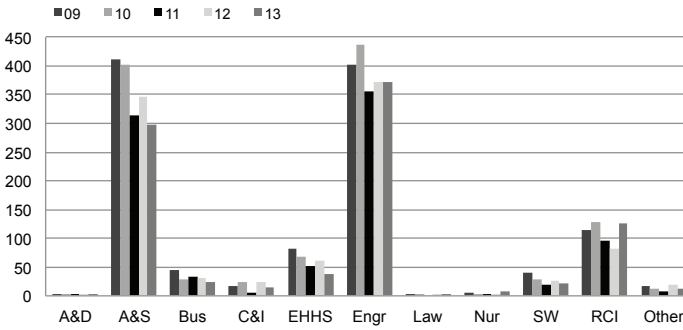
NUMBER OF PROPOSALS SUBMITTED



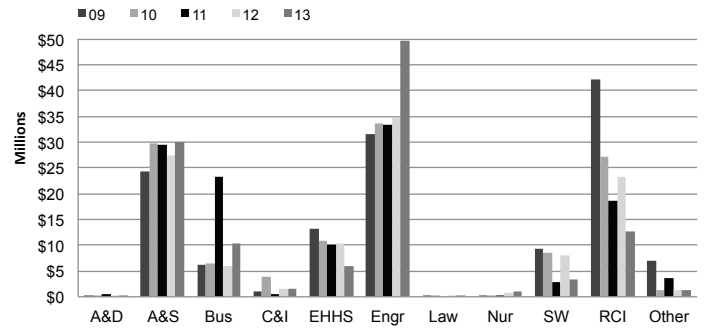
PROPOSAL AMOUNT REQUESTED



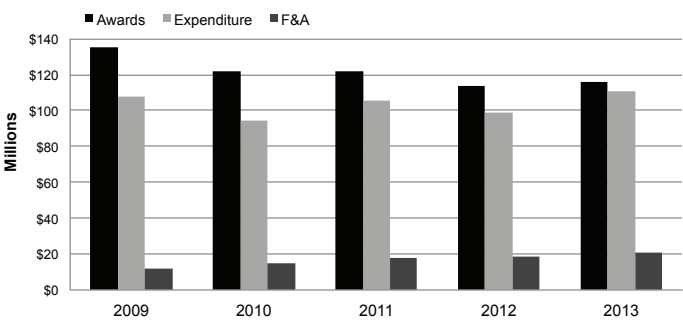
AWARD COUNTS BY COLLEGE



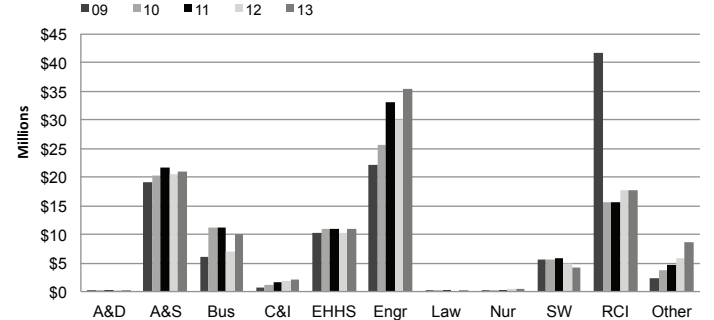
AWARD AMOUNTS BY COLLEGE



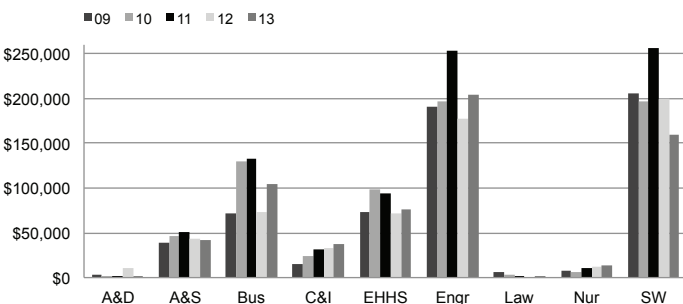
CAMPUS TOTAL DOLLAR AMOUNT



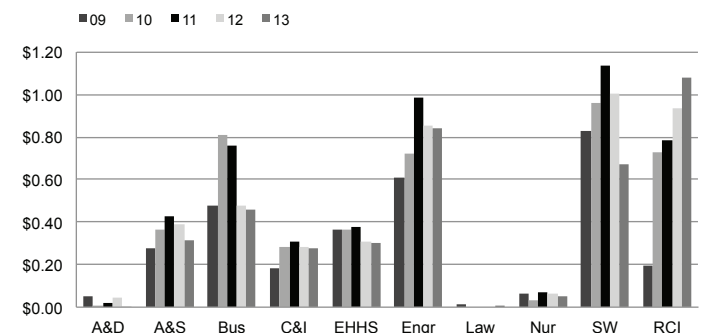
SPONSORED EXPENDITURES BY COLLEGE



SPONSORED EXPENDITURES PER STATE-SUPPORTED FACULTY



F&A EARNED PER DOLLAR INVESTED



HOW QUARTERLY REPORT DATA ARE DERIVED

Quarterly reports are year-to-date comparisons. For example, the first quarter report is composed of data for the first three months of each fiscal year presented while the second quarter report contains data for the first six months of each fiscal year, and so forth.

Data depicting colleges and major research centers are presented to show trends within each unit.

Proposal and award data are recorded in TERA by the Office of Research.

Expenditure, F&A, University support, and faculty count data are taken from IRIS.

For more detailed information about the origins of this data, visit <http://research.utk.edu/reports>