

QUARTERLY REPORT

OFFICE OF RESEARCH—FIRST QUARTER OF FISCAL YEAR 2012

SPONSORED PROPOSALS, AWARDS, AND EXPENDITURES

Senior Management Area	Proposals Submitted, FY 12			Awards Received, FY 12			Sponsored Expenditures	
	No.	Amount Requested	% \$ Incr. Over FY 11	No.	Amount Received	% \$ Incr. Over FY 11	Amount Expended	% \$ Incr. Over FY 11
Architecture & Design	6	\$3,266,254	971%	0	\$0	-100%	\$45,838	-55%
Arts & Sciences	141	\$32,006,988	-55%	139	\$17,518,673	8%	\$7,520,271	-2%
Business Administration	9	\$1,186,005	-90%	16	\$2,558,620	-70%	\$2,497,614	-2%
Communication & Information	5	\$1,066,919	1,272%	8	\$381,710	-65%	\$607,963	9%
Education, Health, & Human Sciences	28	\$15,292,578	-34%	28	\$5,654,439	15%	\$4,603,669	19%
Engineering	138	\$36,842,864	-50%	170	\$19,255,231	37%	\$11,820,283	-1%
Law	0	0	0%	0	\$0	0%	\$0	-100%
Nursing	2	\$441,140	-71%	3	\$651,166	2,343%	\$128,752	11%
Social Work	8	\$221,189	24%	10	\$5,592,864	197%	\$1,595,158	-4%
Research Centers & Institutes	36	\$7,338,356	-78%	33	\$17,473,711	125%	\$6,396,174	-10%
Other	6	\$2,965,487	557%	5	\$534,876	19%	\$2,148,923	89%
Total	379	\$100,627,780	-53%	412	\$69,621,290	25%	\$37,364,643	2%

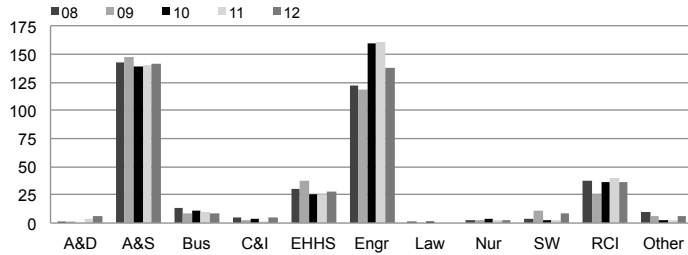
TOP 20 AWARDS

Investigators (Primary PI First)	Departments, Centers, & Institutes	Project Title	Sponsor	Amount*
Tomsovic, Kevin; Li, Fangxing; Liu, Yilu; Tolbert, Leon; Wang, Fei	Electrical Engineering & Computer Science	ERC for Ultra-Wide Area Resilient Electric Energy Transmission Network	National Science Foundation	\$18,500,000
Zacharia, Thomas	Joint Institute for Computational Sciences	High Performance Computing System Acquisition: Towards a Petascale Computing Environment	National Science Foundation	\$6,497,365
Campbell, Paul; Cunningham, Maryanne	Social Work Research & Public Service	MTSU Tennessee Center for Child Welfare FY 2012	Middle Tennessee State University	\$4,297,983
Cole, Gregory	Institute for a Secure & Sustainable Environment	GLORIAD in Africa	US AID - Higher Education for Development (HED)	\$3,500,000
Rawn, Claudia; Bennett, Richard; Keppens, Veerle; Pionke, Christopher; Russell, Margaret	Materials Science & Engineering	Research and Instructional Strategies for Engineering Retention - RISER	National Science Foundation	\$2,000,000
Loeffler, Frank; Ritalahti, Kirsti	Microbiology	Towards Predictive Understanding of Nitrogen Flux in Soils	U.S. Department of Energy	\$1,464,920
Grzywacz, Robert; Bingham, Carrol; Grzywacz-Jones, Katherine; Riedinger, Leo	Physics	Nuclear Spectroscopy Studies with Radioactive and Stable Ion Beams	U.S. Department of Energy	\$1,305,000
Podar, Mircea	Microbiology	From Genomes to Metabolomes: Understanding Mechanisms of Symbiosis	U.S. Department of Energy - Office of Science	\$1,263,673
Riechert, Susan; Benner, Susan	Ctr. for Enhancing Education in Math & Sciences (CEEMS)	VolTeach Noyce Scholarship & Internship Program	National Science Foundation	\$1,196,592
Moore, Shirley; Bosilca, George; Dongarra, Jack; Terpstra, Daniel	Electrical Engineering & Computer Science	Institute for Sustained Performance, Energy, and Resilience (SuPER)	U.S. Department of Energy - Office of Science	\$1,075,000
Sorensen, Soren; Read, Kenneth	Physics	Studies of Hot and Dense Nuclear Matter	U.S. Department of Energy	\$1,070,000
Mazur, Peter	Biochemistry and Cellular and Molecular Biology	Aquaporins, Ice Formation in Cells, and Cryopreservation	DHHS - NIH - National Center for Research Resources	\$999,153
Wirth, Brian	Nuclear Engineering	A Multiscale Investigation of the Mechanisms Controlling Materials Degradation	U.S. Department of Energy - Office of Science	\$942,090
Hines, J.; Upadhyaya, Belle	Nuclear Engineering	Development and Validation of a Lifecycle-based Prognostics Architecture	U.S. Department of Energy	\$846,315
DeCorse, Elizabeth; Hollenbach, Kandace	Anthropology	Archaeological Survey of Federal Landholdings - Cliffines, Scenic Easements	U.S. Department of Interior - National Park Service	\$809,890
Mulligan, Geraldine	Center for Literacy Studies	DRS/CIETAT	Tennessee Department of Human Services	\$801,972
Gilchrist, Michael; Zaretski, Russell	Ecology & Evolutionary Biology	Employing Models of Evolution and Protein Translation to Infer Protein Production	National Science Foundation	\$711,501
Wilhelm, Steven	Microbiology	Biological Degradation of Microcystins: A First Step Towards Biofilters	National Oceanic & Atmospheric Administration	\$703,779
Wodarski, John	Childrens Mental Health Services Research Center	HIV/AIDS and Substance Abuse Primary Prevention in Minority Adolescents	DHHS - Substance Abuse and Mental Health Services	\$670,665
Dai, Pengcheng	Physics	Study Magnetic Excitations in Doped Transition Metal Oxides Using Inelastic Neutron Scattering	U.S. Department of Energy	\$660,000

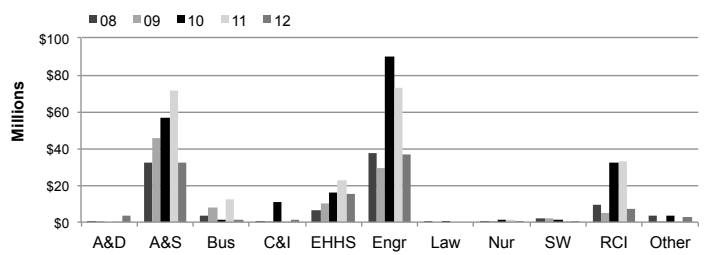
*Anticipated Maximum

**THE UNIVERSITY OF TENNESSEE, KNOXVILLE—OFFICE OF RESEARCH
QUARTERLY REPORT FOR FIRST QUARTER OF FISCAL YEAR 2012**

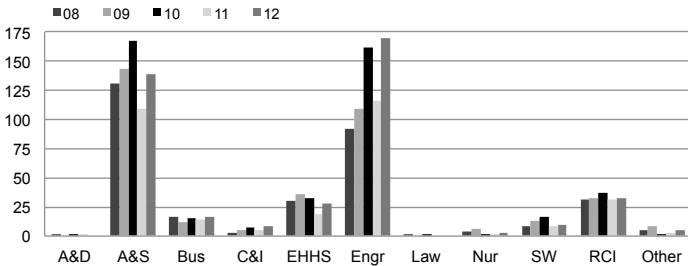
NUMBER OF PROPOSALS SUBMITTED



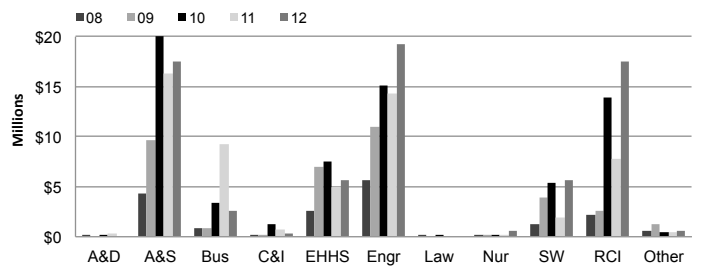
PROPOSAL AMOUNT REQUESTED



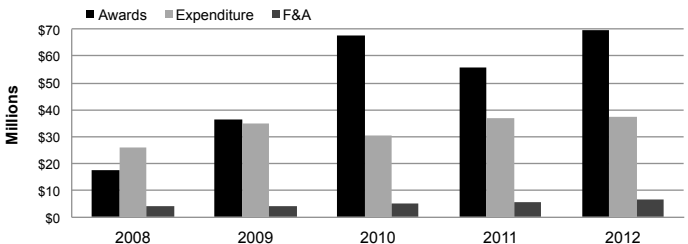
AWARD COUNTS BY COLLEGE



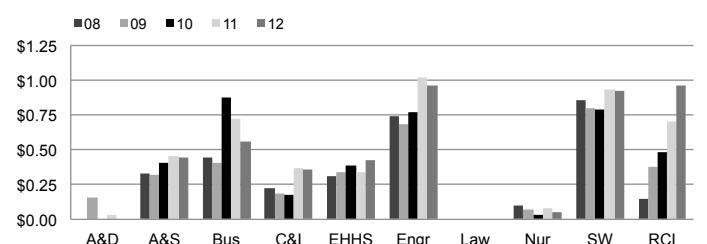
AWARD AMOUNTS BY COLLEGE



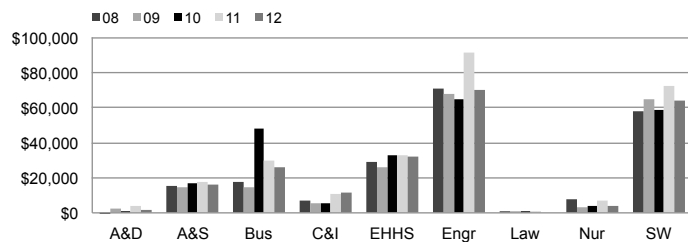
CAMPUS TOTAL DOLLAR AMOUNT



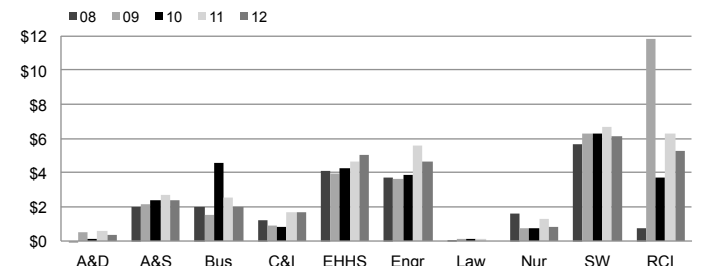
F&A EARNED PER DOLLAR INVESTED



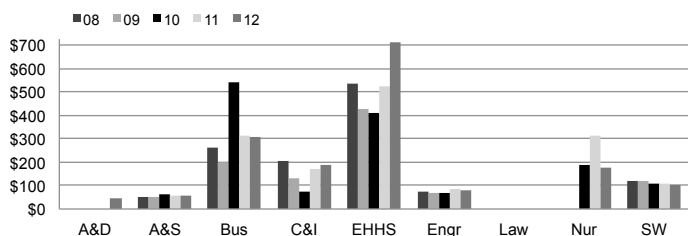
SPONSORED EXPENDITURES PER STATE-SUPPORTED FACULTY



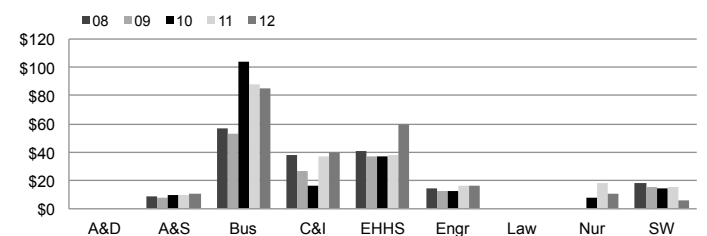
SPONSORED EXPENDITURES PER DOLLAR INVESTED



SPONSORED EXPENDITURES PER SQUARE FOOT



OVERHEAD GENERATED PER SQUARE FOOT



HOW QUARTERLY REPORT DATA ARE DERIVED

Quarterly reports are year-to-date comparisons. For example, the first quarter report is composed of data for the first three months of each fiscal year presented while the second quarter report contains data for the first six months of each fiscal year, and so forth.

Data depicting colleges and major research centers are presented to show trends within each unit.

Proposal and award data are recorded in TERA by the Office of Research.

Expenditure, F&A, University support, and faculty count data are taken from IRIS.

For more detailed information about the origins of this data, visit <http://research.utk.edu/reports>