

QUARTERLY REPORT

OFFICE OF RESEARCH—FIRST QUARTER OF FISCAL YEAR 2010

SPONSORED PROPOSALS, AWARDS, AND EXPENDITURES

Senior Management Area	Proposals Submitted, FY 10			Awards Received, FY 10			Sponsored Expenditures	
	No.	Amount Requested	% \$ Incr. Over FY 09	No.	Amount Received	% \$ Incr. Over FY 09	Amount Expended	% \$ Incr. Over FY 09
Arts & Sciences	139	\$56,580,966	24%	167	\$20,193,525	108%	\$7,382,248	2%
Engineering	159	\$89,998,444	207%	162	\$15,173,042	39%	\$8,525,989	9%
Business Administration	11	\$1,406,899	-82%	15	\$3,386,143	419%	\$4,127,905	236%
Law	1	\$129,468	n/a	1	\$129,468	n/a	\$33,650	-25%
Architecture & Design	0	\$0	-100%	1	\$74,999	n/a	\$13,216	-77%
Nursing	4	\$1,569,800	1,396%	2	\$86,081	-56%	\$83,166	4%
Social Work	2	\$1,504,853	-33%	17	\$5,413,525	38%	\$1,643,986	-6%
Education, Health, & Human Sciences	25	\$15,810,308	60%	32	\$7,522,304	8%	\$3,643,867	1%
Communication & Information	4	\$10,916,938	5,634%	7	\$1,319,846	1,626%	\$245,140	-11%
Research Centers	36	\$32,495,716	532%	37	\$13,885,846	426%	\$3,593,596	-71%
Other	3	\$3,768,412	797%	2	\$438,650	-69%	\$922,166	78%
Total	384	\$214,181,804	112%	443	\$67,623,429	85%	\$30,214,929	-14%

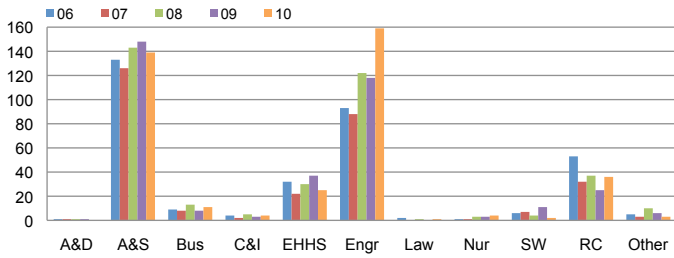
TOP 20 AWARDS

Investigators (Primary PI First)	Departments, Centers, & Institutes	Project Title	Sponsor	Maximum Amount*
Ahern, Sean D.; Huang, Jian; Klasky, Scott A.	Joint Institute for Computational Sciences	ARRA: NCS Remote Data Analysis and Visualization Center	National Science Foundation	\$10,000,000
Moore, John R.	Construction Industry Research & Policy Center	Provide Services Supportive of the Wage and Hour Div. of the Employment Standards Adm.	US Dept. of Labor - Financial Services Center/OASAM	\$9,275,712
Miller, Alex; Barton, Rhonda W.; Riblett, John E.	Center for Executive Education	Continuous Process Improvement in Air Force Acquisition	Air Force	\$7,499,619
Glisson, Charles; Cheatham, Joanna; Dukes, Denzel; Green, Philip; Hemmelgarn, Anthony	Children's Mental Health Service Research Center	Testing an Organizational Implementation Strategy in Children's Mental Health	NIH-National Institute of Mental Health	\$3,170,520
Heilbronn, Lawrence; Counce, Robert; Dean, David; Nazarewicz, Witold; Papenbrock, Thomas	Nuclear Engineering	Nuclear Structure Theory in Energy Production	DOE-Idaho Operations Office	\$3,160,000
Becker, Jeffrey M.	Microbiology	Peptide-Cell Interactions in <i>Saccharomyces cerevisiae</i>	NIH - National Institute of General Medical Sciences	\$2,699,269
Zacharia, Thomas	Joint Institute for Computational Sciences	ARRA: Collaborative Research: An EPSCoR Desktop to Teragrid EcoSystem	National Science Foundation	\$2,675,331
Cole, Gregory Scott	Office of Research	ARRA: The Taj: A New Model for Global Federated Network Infrastructure for Science & Education	National Science Foundation	\$2,293,378
Campbell, Paul; Cheatham, Joanna; Cunningham, Mary; Cunningham, Maryanne Lynch	SWORPS	Child Care Assessment Supportive Services Program	TN Dept of Human Services	\$2,270,000
Wodarski, John S.	Children's Mental Health Service Research Center	HICV/AIDS Primary Prevention Program with Caribbean Youth	Substance Abuse & Mental Health Services Adm (SAMSA)	\$2,240,730
Richards, Stephen H.; Flinchum, Deanna L.	Center for Transportation Research	University Transportation Center Program Southeastern Transportation Center Rebid	US Dept. of Transportation - Research and Innovative Tech.	\$2,085,000
Hayward, Jason Peter	Nuclear Engineering	ARI-MA Research Program in Exploitation of Time-Correlated Signatures and Directionality to Detect Shielded Highly-Enriched Uranium	National Science Foundation	\$1,995,713
Long, Vena M.	Education, Health & Human Sciences	Tennessee Governor's Academy	TN Dept of Education	\$1,849,608
Birdwell, John; Horn, Sally; Icovie, David; Wang, Tse-Wei	Electrical Engineering & Computer Science	Similarity-Based Indexing and Search of Database for Correlation of Object Properties with Ref	Army - United States Army Aviation & Missile Command	\$1,682,482
Kovatch, Patricia Anne; Zacharia, Thomas	Joint Institute for Computational Sciences	Enhancing Computational Science Opportunities on NSF's Kraken	National Science Foundation	\$1,680,000
Hayward, Jason Peter	Nuclear Engineering	Glasses for Detection of Penetrating Radiation via the Cherenkov Effect	Defense Threat Reduction Agency	\$1,043,543
Hallam, Rena Ann	Child & Family Studies	Signal Centers - CCRR-Hallam	Signal Centers, Inc	\$1,005,142
Wodarski, John S.	Children's Mental Health Service Research Center	The East Tennessee Assertive Adolescent Family Treatment Program	Substance Abuse & Mental Health Services Adm (SAMSA)	\$896,927
Moore, Shirley V.; Terpstra, Daniel K.	Ctr for Info Tech Rsch	ARRA: Collaborative Research: CSR: Large: Multicore Application Modeling Interface (MAMI)	National Science Foundation	\$800,001
Fussell, Elizabeth M.	Center on Disability & Employment	DRS/CIETAT	TN Dept of Human Services	\$789,700

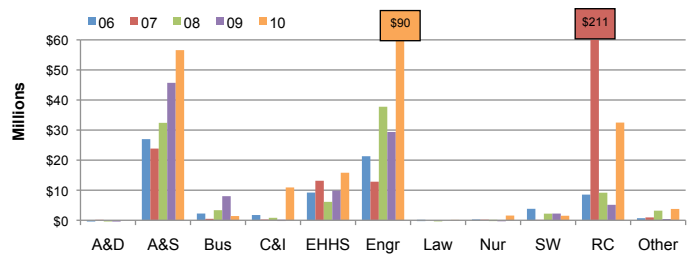
*Anticipated Amount

THE UNIVERSITY OF TENNESSEE, KNOXVILLE—OFFICE OF RESEARCH QUARTERLY REPORT FOR THE FIRST QUARTER OF FISCAL YEAR 2010

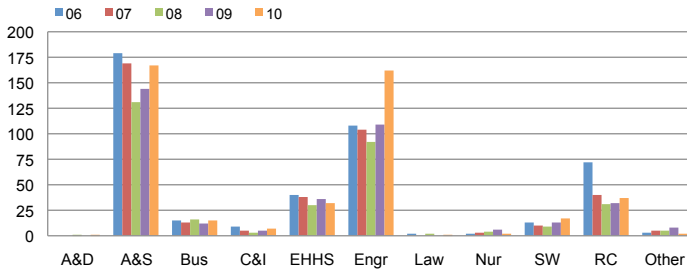
NUMBER OF PROPOSALS SUBMITTED



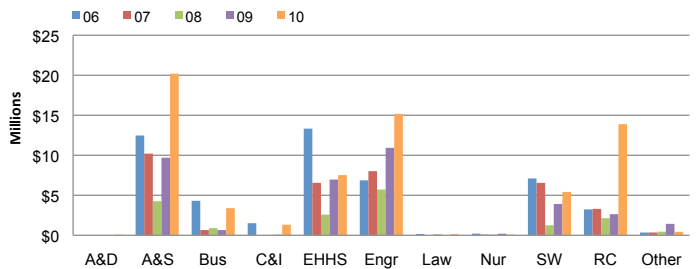
PROPOSAL AMOUNT REQUESTED



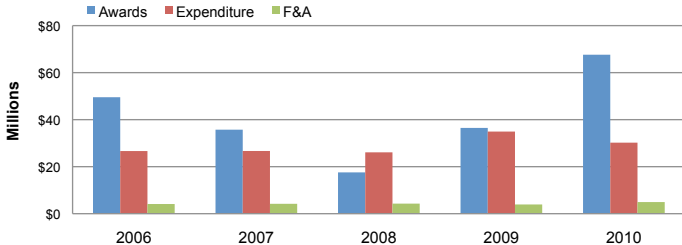
AWARD COUNTS BY COLLEGE



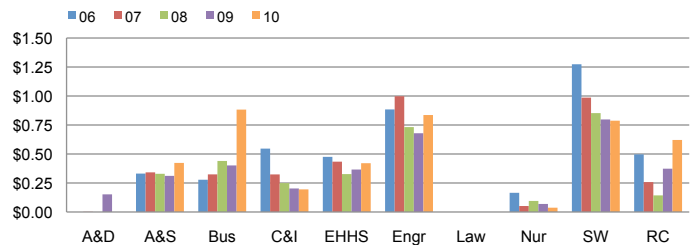
AWARD AMOUNTS BY COLLEGE



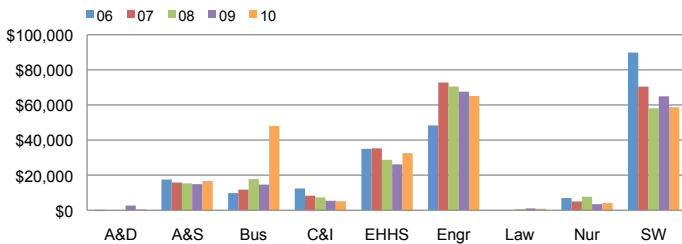
CAMPUS TOTAL DOLLAR AMOUNT



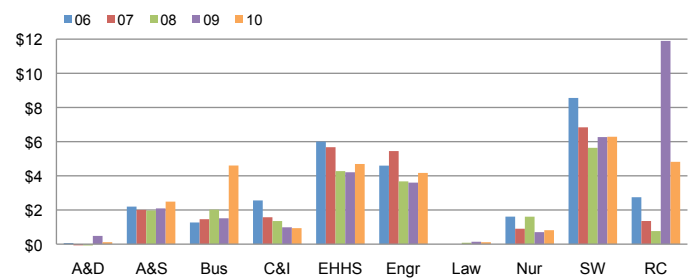
F&A EARNED PER DOLLAR INVESTED



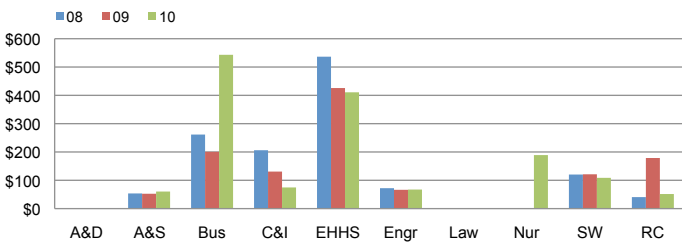
SPONSORED EXPENDITURES PER STATE-SUPPORTED FACULTY



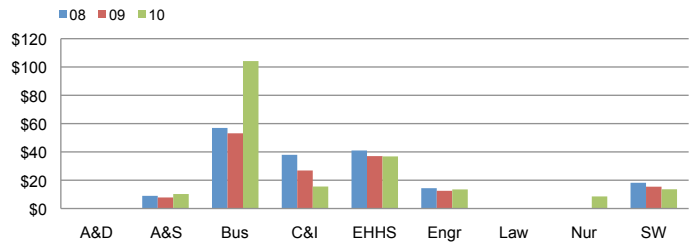
SPONSORED EXPENDITURES PER DOLLAR INVESTED



SPONSORED EXPENDITURES PER SQUARE FOOT



OVERHEAD GENERATED PER SQUARE FOOT



HOW QUARTERLY REPORT DATA ARE DERIVED

Quarterly reports are year-to-date comparisons. For example, the first quarter report is comprised of data for the first three months of each fiscal year presented while the second quarter report contains data for the first six months of each fiscal year, and so forth.

Data depicting colleges and major research centers are presented to show trends within each unit.

Proposal and award data are recorded in Coeus by the Office of Research.

Expenditure, F&A, University support, and faculty count data are taken from IRIS.

For more detailed information about the origins of this data, visit <http://research.utk.edu/reports>